



SEAD

Build. Automate. Accelerate.



Business Identity

Sead is a multidisciplinary engineering, automation, and industrial-solutions provider serving manufacturing, processing, packaging, and beverage industries across East, Central, and Southern Africa. Since 2005, Sead has built a strong reputation as a reliable plant-support partner, delivering integrated solutions that enhance efficiency, modernize operations, and ensure long-term production continuity.

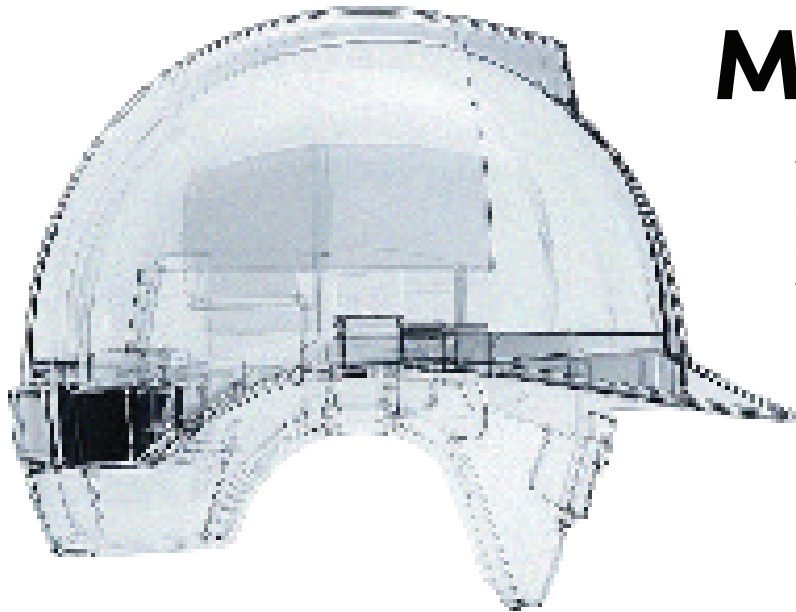
With expertise that spans mechanical, electrical, and automation engineering, Sead supports factories throughout the full lifecycle of industrial operations – from system design and integration to installation, commissioning, maintenance, and performance optimization. The company combines engineering fundamentals with cutting-edge automation technologies, positioning itself as a long-term technical partner for forward-thinking industries.

Our Purpose

Sead exists to accelerate industrial growth across Africa by providing modern, reliable, and integrated engineering solutions. Through automation, system integration, and comprehensive support services, Sead helps factories reduce downtime, improve operational safety, optimize production performance, and remain competitive in fast-evolving markets.

Vision

To be the leading provider of engineering, automation, and industrial solutions across East, Central, and Southern Africa – driving modernization, efficiency, and sustainable growth in the continent’s manufacturing and processing sectors.



Mission

To deliver innovative, reliable, and integrated engineering solutions – from automation and system integration to maintenance and turnkey project execution – while building long-term partnerships, developing local technical talent, and supporting industrial advancement across Africa.

The image features a background of technical engineering drawings on a white surface. Several sheets of paper are rolled up, showing various mechanical parts with dimensions and hatching. In the foreground, there are two large, dark, metallic gears with a central hole and four mounting holes. A metal chain with several links is draped across the gears. A silver vernier caliper is positioned in the upper right, and a ruler is visible below it. The text 'Our Services' is centered over the scene in a white, bold, sans-serif font.

Our Services

Industrial Automation & Control Systems

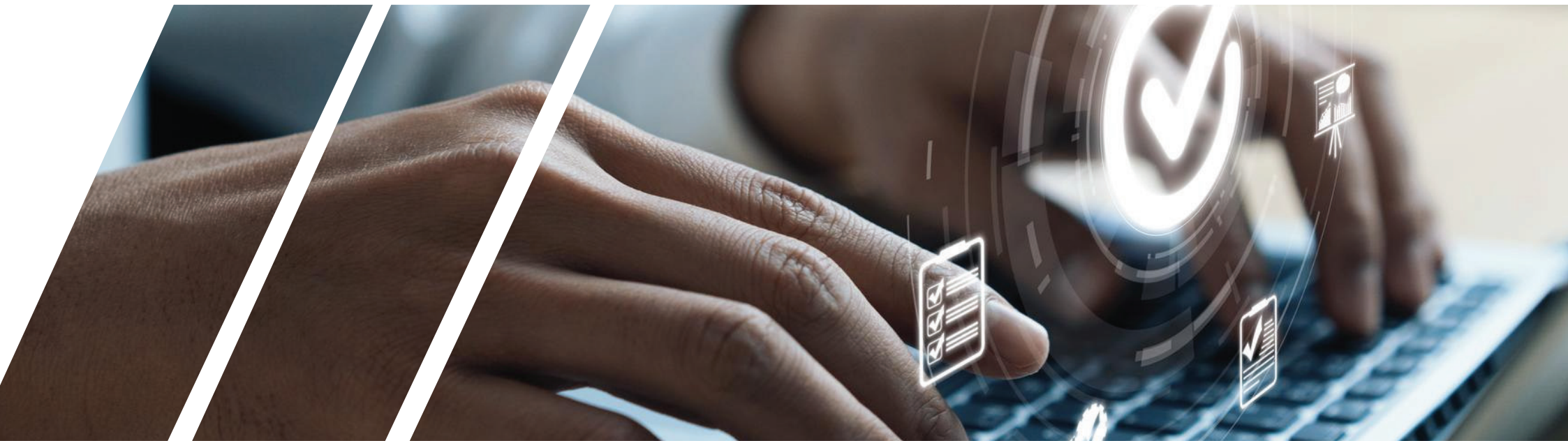


PLC programming, upgrades, and troubleshooting
Automation solutions for new production lines and retrofits
Integration of control systems into existing and new installations
System architecture design and commissioning
Production line optimization for increased throughput and stability

Build. Automate. Accelerate.

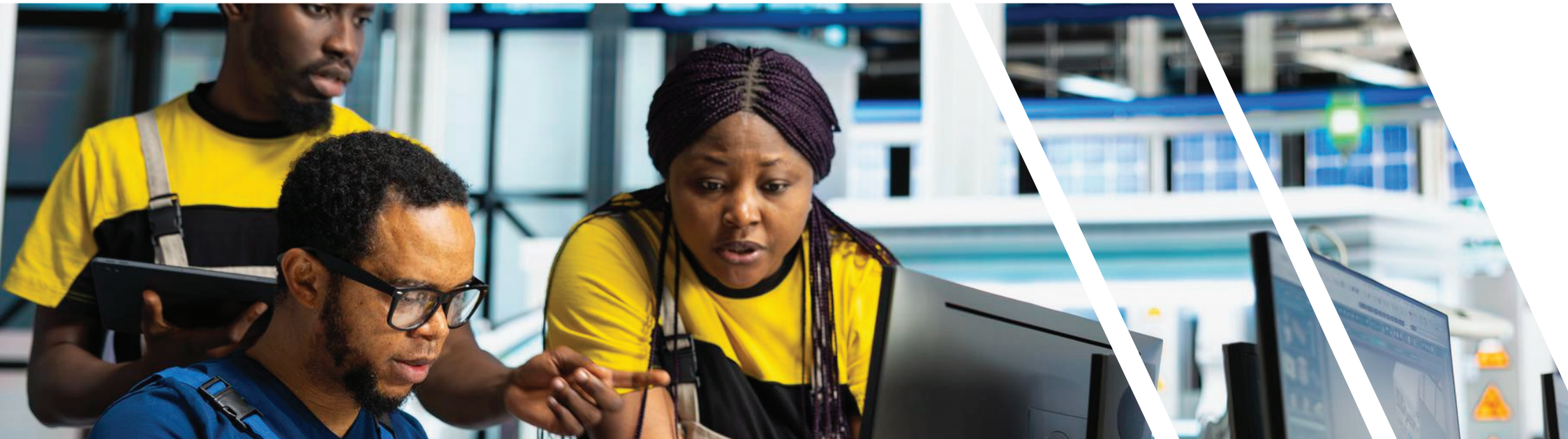
System Integration

End-to-end integration of mechanical, electrical, and software systems
Synchronization of multi-vendor industrial equipment
Automation modules for processing, packaging, and bottling lines
Customized control solutions tailored to plant-specific needs



Build. Automate. Accelerate.

Engineering Consulting



Feasibility studies for automation upgrades and new installations
Comprehensive performance, safety, and operational audits
Recommendations on modernization, efficiency, and energy optimization
Engineering design for new equipment layouts and process redesigns

Build. Automate. Accelerate.

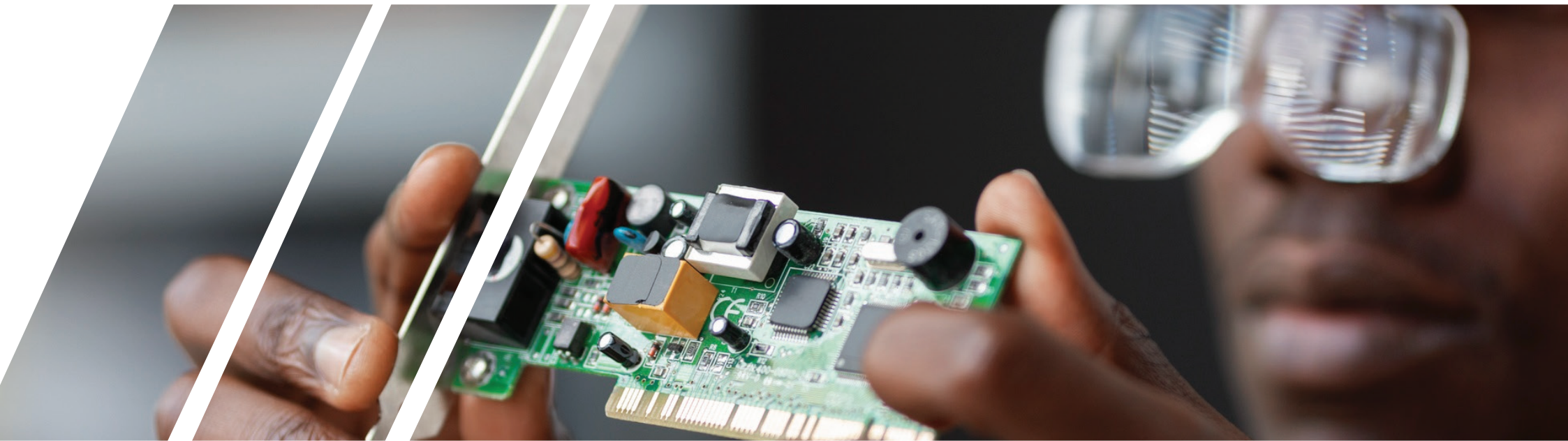
Mechanical & Electrical Support



Preventive and corrective maintenance for factory equipment
Mechanical overhaul, alignment, and line optimization
Electrical troubleshooting, wiring, panel design, and instrumentation support
Installation and commissioning of industrial machinery

Build. Automate. Accelerate.

Turnkey Project Delivery



Complete design, supply, installation, and commissioning services
Full project management from consultation to handover
Integrated engineering solutions for new or upgraded factory processes
Specialized modules such as dosing systems, filling upgrades, and process automation enhancements

Build. Automate. Accelerate.

Core Expertise Demonstrated Across Africa Projects

Inspection Technology – EBI, FBI, cap & label inspection

Filling Technology – Beer, CSD, water (PET & glass)

Cleaning Technology – CIP, bottle washers, hygiene optimization

Packing Technology – Shrink wrappers, case packers, palletizers

OEM Focus – Krones, KHS, Sidel bottling and packaging systems

Tanzania Breweries Limited (TBL)

Multi-Line Bottling Support



Plant Type: Brewery (Glass)

OEM Equipment: Krones

PROJECT SCOPE

Breakdown support and optimization of:

- Glass bottle-filler-capper blocks
- Beer inspection systems (EBI & FBI)
- Cleaning technology optimization:
- Bottle washers
- CIP systems for beer filling lines
- Line troubleshooting focused on:
- Foam control
- Fill-level consistency
- Conveyor accumulation issues
- LBI inspection issues
- Palletizer and depalletizer issues

RESULTS DELIVERED

- Improved line stability during peak production
- Reduced beer losses due to over-foaming
- Improved bottle cleanliness and inspection reliability
- Increased line availability and uptime

Tanzania Breweries Limited (TBL)

Multi-Line Bottling Support



Plant Type: Carbonated Soft Drinks (PET)

OEM Equipment: Krones

PROJECT SCOPE

- PET bottling line optimization including:
 - Filler change parts and neck handling systems
 - Carbonation and filling accuracy tuning
- Inspection technology:
 - Fill-level inspection
 - Cap inspection and rejection
- Packing and end-of-line improvements:
 - Shrink wrapper setup
 - Case packer synchronization

RESULTS DELIVERED

- Reduced underfill and cap-related rejects
- Improved carbonation consistency
- Stable end-of-line flow with reduced jams
- Faster SKU changeovers

Nyanza Bottling Company

Mwanza Plant



Plant Type: Carbonated Soft Drinks Glass

OEM Equipment: Krones

PROJECT SCOPE

- High-speed line troubleshooting and recovery
- Filling technology services:
 - Valve maintenance and calibration
 - CO₂ control and product temperature stabilization
- Cleaning technology:
 - CIP cycle validation
 - Chemical consumption optimization
- Packing technology:
 - Shrink wrapper and palletizer reliability improvements

RESULTS DELIVERED

- Increased production throughput
- Reduced product giveaway
- Improved hygienic safety and cleaning efficiency
- Reduced downtime at packer and palletizer stations

Ecocan Africa -Kenya

Cross-Plant Inspection Technology Standardization

Client Type: Bottle cleaning for recycling

PROJECT SCOPE

- Inspection technology audits
- Standardization of:
 - Reject logic
 - Alarm handling
 - Operator fault response
- Training of quality and maintenance teams

RESULTS DELIVERED

- Consistent product quality
- Reduced false rejects
- Faster fault diagnostics



Kenya

Line Modernization & Retrofit Projects

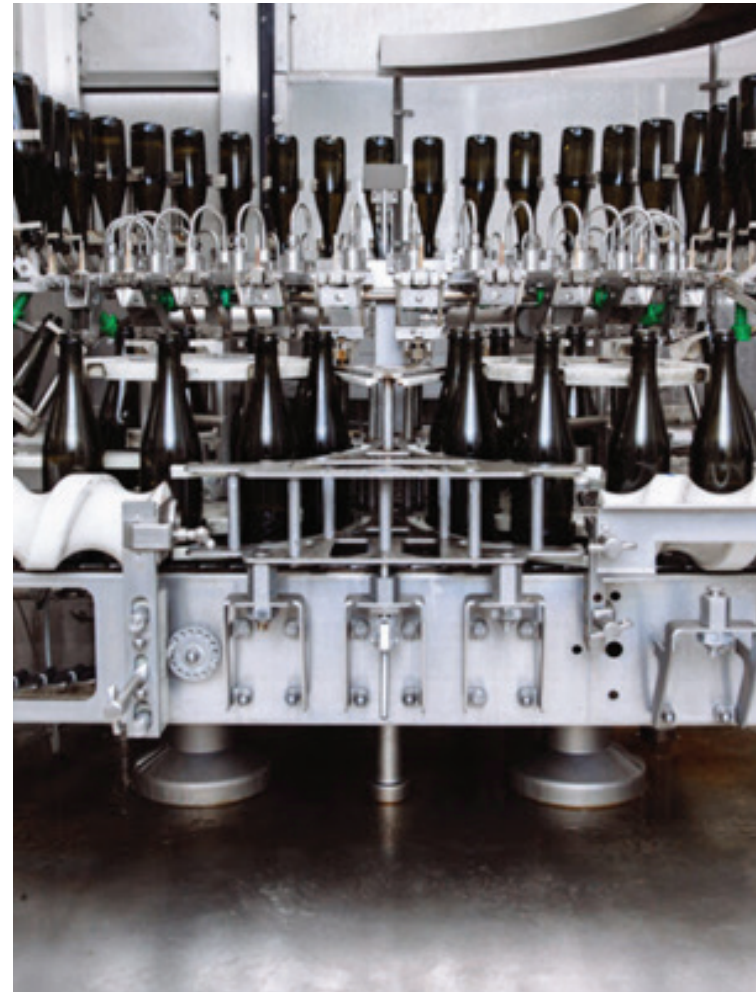
Client Type: Existing beverage plants

PROJECT SCOPE

- Retrofit of legacy Kronos & SIDEL machines
- Sensor upgrades and safety improvements
- Documentation updates (electrical & mechanical)
- Automation and control system support

RESULTS DELIVERED

- Extended equipment life
- Improved spare parts availability
- Better compliance with modern safety standards



Our Clients



Industries We Serve

Sead supports a wide range of industrial clients, including:

Beverage Manufacturers

Bottled water, soft drinks, juices, and alcoholic beverages seeking automation and high-speed bottling solutions.

Food Processing Plants

Processing and packaging facilities requiring safety-compliant, efficient production environments.

Pharmaceutical & Chemical Manufacturers

Producers needing high-precision automation, dosing systems, and robust process control.

Packaging & Bottling Plants

PET, glass, and metal packaging facilities requiring line retrofits and integrated automation.

Industrial & Manufacturing Plants

Factories seeking modernization, maintenance support, and long-term technical partnerships.

Market Position

Our Strengths include

- Two decades of operational experience
- Ability to deliver both traditional and modern automation solutions
- End-to-end service offering that eliminates multi-vendor complexity
- Strong after-sales support, remote assistance, and maintenance contracts
- Regional presence across East, Central, and Southern Africa

Sead is viewed as a trusted, dependable partner with the technical capacity to support both small-scale automation improvements and large-scale project deployments.

Regional Footprint

East Africa
Central Africa
Southern Africa



Our Partners

We collaborate with leading global companies to ensure our customers receive the highest standards of products and services. Our work focuses on improving profit margins, optimizing production efficiency, and guaranteeing consistent product quality. By implementing reliable, repeatable, and data-driven processes, we support clients in achieving stronger operational performance. Our partnerships have delivered proven success across projects of every scale.

